


## 2kW Electric Heater c/w Thermostat Control Instructions: Models 1105

User instruction for fan heater model:

*These instructions should be read carefully and retained for future reference*

### Important Notes

- This product is only suitable for well insulated spaces or occasional use
- Do not use this appliance as a primary heat source
- This heater must not be located immediately below a fixed socket outlet.
- Do not use the heater in the immediate surrounds of a bath, a shower, or a swimming pool.
- **Do not cover this heater, or obstruct the air inlet or outlet, otherwise there is a risk of overheating.** 
- Do not use outdoors
- The heater must be cooled down completely before any maintenance
- After unpacking, please make sure that the appliance is intact, with no signs of damage caused by transport. If in doubt, do not use the appliance and contact the Service Centre.
- During normal operation this appliance will emit noise from the internal fan unit.
- If the supply cord is damaged, it must be replaced by the manufacturer, its service agent or similarly qualified persons in order to avoid a hazard.
- Children should be supervised to ensure that they do not play with the appliance or handset
- Children of less than 3 years should be kept away unless continuously supervised. Children aged from 3 years and less than 8 years shall only switch on / off the appliance provided that it has been placed in its intended normal operating position and they have been given supervision or instruction concerning use of the appliance in a safe way and understand the hazards involved. Children aged from 3 years and less than 8 years shall not plug in, regulate, clean the appliance or perform user maintenance.
- This appliance can be used by children aged from 8 years and above and persons with reduced physical, sensory or mental capabilities or lack of experience and knowledge if they have been given supervision or instruction concerning use of the appliance in a safe way and understand the hazards involved. Cleaning and user maintenance shall not be made by children without supervision
- Some parts of this product can become very hot and could cause burns. Particular attention has to be given where children and vulnerable people are in the vicinity.
- Ensure that furniture, curtains and other combustible materials are positioned no closer than 1m from the front of the fire.
- Do not run cord under carpeting, do not cover cord with throw rugs, runners or the like. Arrange cord away from traffic areas and where it will not be tripped over.
- Do not insert or allow foreign objects to enter any ventilation or exhaust openings as this may cause electric shock, fire or damage the appliance
- Do not block air intakes or exhaust openings in any manner
- Do not use on soft surfaces such as a bed, where openings may become blocked.
- If this fire is supplied through an extension cable, please ensure that it is the only appliance plugged into the extension and that the instructions for the extension cable / reel are followed.
- CAUTION: In order to avoid a hazard due to inadvertent resetting of the thermal cut out, this appliance must not be supplied through an external switching device, such as a timer, or connected to a circuit that is regularly switched on and off by the utility.
- This appliance must be positioned so that the plug / fused spur is accessible
- In the event of a fault please disconnect the fire from the mains supply
- Warning: This appliance must be earthed.

The wires in the mains lead connected to this appliance are coloured in accordance with the following code:

Green and Yellow	Earth
Blue	Neutral
Brown	Live

As the colour of the wires in the mains lead of this appliance may not correspond with the coloured markings identifying the terminals in your plug, proceed as follows. The wire which is coloured Green and Yellow must be connected to the terminal in the plug which is marked with the letter E or by the earth symbol or coloured Green or Green and Yellow. The wire which is coloured Blue must be connected to the terminal which is marked with the letter N or coloured Black. The wire which is coloured Brown must be connected to the terminal which is marked with letter L or coloured Red.

## Fire Installation

Unpack the heater carefully and retain all packaging for future use. Ensure that all packing items are moved and read any warning labels carefully (see Maintenance Section). If the fire is to be installed in front of an existing chimney opening and there is any risk of chimney debris falling down onto the fire it is recommended that before installation the flue or opening is sealed off with non-combustible non-fibrous insulation materials. Do not install into an existing fireplace that is prone to dampness. Should it be necessary to cap and seal the chimney to prevent personal injury, a professional should be hired to do the work.

## Wall / Timber or Marble back panel preparation

### Section 1

- Carefully mark out the hole positions as in figure 5 below, drill and plug fixing holes ensuring the correct plugs for the wall / back panel are used (not supplied).
- Fit two pan head screws no.8 x min 25mm long (not supplied), leaving approximately 2mm between the wall / panel and the screw head

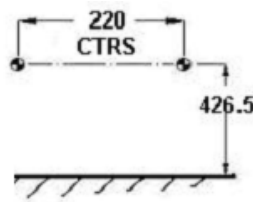
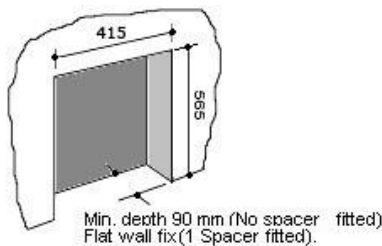


Fig5 (With Spacer Frame)

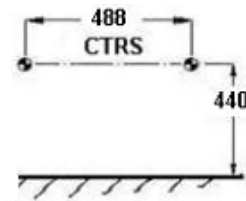


Fig5 (No spacer frame)

### Suite

If the fire is supplied installed into the surround / suite, remove the 2 x transit screws going into the hearth from rear of the fire. Ensure all power connections to the fire are secure.

### Section 2

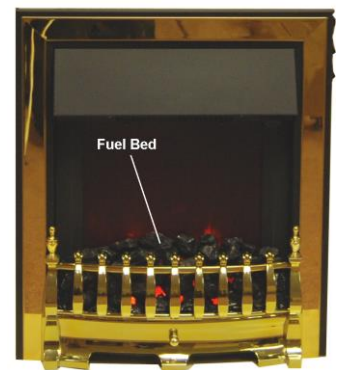
- Pass the fire's electrical cable through the fire aperture in the back panel and connect the cable up to the fire.
- Lift the fire in to the aperture cable side first, moving from the left, taking great care not to damage either the cable or hearth. When the cable side of the fire is in position, lift the fire in to a central position opposite the retaining screws. Lift the fire up and hook the keyhole slots on to the retaining screws. Please note that to ensure a snug fit against the wall / back panel the screw heads as mentioned in section 1 should be adjusted in or out.

## Preparation for use

- Check that the supply voltage details on your fuel effect fire are in accordance with your electricity supply. Your fire is fitted with a plug incorporating a 13amp fuse. In the event of replacing the fuse in the plug supplied, a 13amp fuse approved by ASTA to BS 1362 must be used.
- Before switching on, please read the following operation instructions:

### Coals/Pebbles:

This fire is supplied with a one piece removable fuel bed, to remove the fuel bed grip the top of the fuel bed and pull upwards, the fuel bed should slide out of position. Refitting is a reversal of the removal directions ensuring that the fuel bed sits on the angled bracket provided inside the fire.



### Thermostat:

The thermostat dial is mounted on the right-hand side below the canopy of the heater box and can be used to control the heat output to maintain a constant room temperature to suit user requirements. This will ensure that excessive heat is not produced unnecessarily.

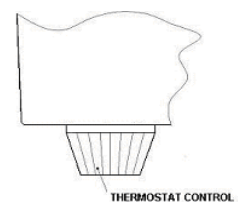
### To set the temperature:

The dial is marked with numbers to indicate the maximum and minimum temperature positions. Start with setting 9 and when the room has reached a desired level turn the dial slowly to left until the thermostat 'clicks off'. The thermostat will then maintain the room at the selected level. To increase the temperature, turn the dial back to right to a higher setting.

**Note: - It is possible that if the room temperature is higher than the thermostat setting it will not come into operation and the heater will remain off until the temperature of the room cools.**

### Operation of the Switches – Located on the right hand side of the fire

- The top switch on the right hand side (marked with a light bulb) controls the lamp.
- The lower two switches operate the fan convactor heater. To use the heater the middle of the three switches marked **O / I** (**O** is off, **I** is on) should be operated first for 1 kW of heat. The bottom switch also marked **O / I** should be used together with the middle switch to give 2kW of heat.



## Safety thermal cut-out

The appliance is fitted with an Electronic Safety Control (E.S.). This is a safety device, which switches off the fire if, for any reason, the appliance overheats. The E.S. Control can only be re-set after the appliance has cooled down.

In order to re-set the E.S. Control proceed as follows:

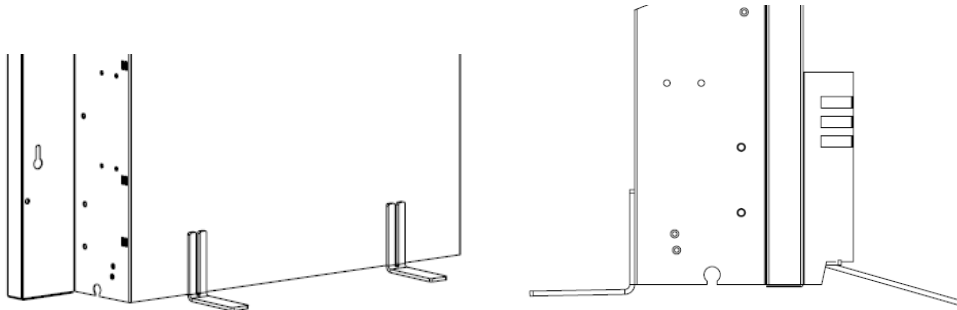
- Switch off the appliance and leave for approximately 5-10 minutes.
- Switch on appliance and the E.S. Control will re-set.
- Ensure that the appliance is functioning correctly.

If the E.S. Control operates again, it is advisable to have the appliance checked out by a competent Electrician.

## Using the fire as a portable appliance

Should you decide to use the appliance in a different location simply lift the fire vertically and towards to unhook from the keyhole brackets. Lift appliance away from the suite. The bracket / stands supplied with this appliance are to be fixed using the existing screws on the appliance and are to prevent the appliance falling over whilst in use.

Loosen the screws a couple of turns enough to enable you to slide the brackets into position. Once in position retighten the screws (see below). The appliance is now ready for use in another room / location



**\*IMPORTANT\*** This appliance must have the feet / brackets fitted to be used as a portable appliance. These feet / brackets are to prevent the fire from tipping over.

**CAUTION:** In order to avoid a hazard due to inadvertent resetting of the thermal cut out, this appliance **must not** be supplied through an external switching device, such as a timer, or connected to a circuit that is regularly switched on and off by the utility.

**PLEASE NOTE THAT THIS APPLIANCE USES A MOTOR TO OPERATE THE FLAME EFFECT AND THAT IT MAY BE POSSIBLE TO HEAR IT WHERE THE BACKGROUND NOISE IS VERY LOW. THIS IS NORMAL AND SHOULD NOT BE A CAUSE OF CONCERN.**

## Maintenance

**WARNING:** There are no internal user serviceable parts, i.e. bulbs, in this product. Under no circumstance should access be gained to the internal parts other than by a suitably qualified person.

The area around the fire should be kept free of any materials such as lint or house dust (i.e. Animal hair/ carpet fibres) that could be drawn into the internal workings of the appliance and hence affect the performance. We recommend that you clean around the fan grille housing at regular intervals. This can be done using standard vacuum cleaner and suitable attachment. Additionally regular vacuuming of the inside of the fire bottom can be done using a standard vacuum cleaner attachment by removing the fuel bed.

**Please note:** if the supply cord on this appliance is damaged it must be replaced by the manufacturer, Authorised Service Agent, or a qualified person to avoid a hazard.

**Note:** To prevent scratching of the front screen, this appliance should be cleaned with a damp cloth only.

## Fault finding – symptoms and cure.

It is highly unlikely you should have a fault with your heater, but should there appear to be a problem, please refer to the following checklist of our most frequent questions from customers. If these do not answer your query please contact your retailer, or call us.

### No light effect

Please check – does the heater still work?

If **YES** – it will almost certainly need a new LED unit (See maintenance section)

If **NO** – has the heater cut-out operated? To protect against overheating please refer to safety thermal cut-out section above.

If the appliance is still not working, first change the 13amp fuse in the plug with one which you know works. Secondly, check the wall socket by plugging a table lamp that you know works on another socket. If this does not work get an electrician to check the socket.

## Electric Fire Guarantee

**Be Modern Ltd.** (the 'Company') provides a **Twelve month** guarantee in respect of electric fire (the 'Product') ranges.

**1. The Twelve month Guarantee applies to:**

- a. All products in the ranges manufactured by the 'Company' (but subject to the exceptions below):  
where
- b. The product has been purchased and installed within the UK and in respect of
- c. The initial installation: and in favour of
- d. The original purchaser

**2. Proof of Purchase must be retained by the Purchaser**

**3. The Twelve month Guarantee does not apply to:**

- a. **Damage or inferior workmanship practices whilst the 'Product' is being installed**
- b. **Damage caused by mis-use of the 'Product' or where normal standards of care and use have not been complied with.**
- c. **Damage through a malfunction or an inadequately installed electric fire.**
- d. **Damage or defects due to mis-use, accident or unauthorised alterations.**

**4. During the twelve months after the 'Product' has been supplied, the Guarantee covers the make good (whether by repair or replacement at the Company's option) of defects arising from defective manufacture of materials of 'Product' covered in Para 1 all at no cost to the purchaser on the proviso:**

- a. The Product has been installed as Be Modern recommendations
- b. The Purchaser uninstalls the Product and makes it available for collection by Be Modern.

**This Guarantee does not affect your statutory rights**

**On requiring service the purchaser should contact the retailer who supplied your product who will assist and advise you as necessary.**

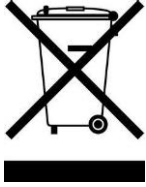
### Be Modern Ltd. Customer Services

Tel (0191) 430 0901

Fax (0191) 430 9522



## Environment



Meaning of crossed –out wheeled dustbin:

Electrical appliances should not be disposed as unsorted municipal waste. Separate collection facilities should be used in the disposal of electrical appliances. Contact your local government for the information about the available collection systems. If electrical appliances are disposed of in landfills or dumps, hazardous substances can leak into the groundwater and get into the food chain, damaging your health and well-being. When old appliances are replaced by the new ones, it is a legal obligation for the retailer to take back the old appliance for disposals at least free of charge.



This fire complies with the Safety Standards EN 60335-1 and EN 60335-2-30 which covers the essential requirements of the Low Voltage Directive 2014/35/EU and the EMC standards EN 55014-1; EN 55014-2; EN 61000-3-2 and EN 61000-3-3 which covers the essential requirements of the European Electro Magnetic Compatibility 2014/30/EU, and the RED standards EN300220-2, EN301489-1, EN301489-3 and EN6247 which covers the essential requirements of the European Radio Equipment Directive 2014/53/EU.



This fire complies with the Safety Standards BS 60335-1 and BS 60335-2-30 which covers the essential requirements of the Electrical Equipment (Safety) Regulations 2016 and the EMC standards BS 55014-1; BS 55014-2; BS 61000-3-2 and BS 61000-3-3 which covers the essential requirements of the Electro Magnetic Compatibility Regulations 2016, and the RED standards BS 300220-2, BS 301489-1, BS 301489-3 and BS 6247 which covers the essential requirements of the Radio Equipment Regulations 2017.



RoHS stands for Restriction of Hazardous Substances, and impacts the entire electronics industry and many electrical products as well. The Restrictions of the Use of Certain Hazardous Substances in Electrical and Electronic Equipment Regulations 2012, originated in the European Union in 2002 and restricts the use of six hazardous materials found in electrical and electronic products. All applicable products in the EU and UK market since July 1, 2006 must pass RoHS compliance.

Table 2

## Information requirements for electric local space heaters

Model identifier(s): 1105 Fazer, Vitesse, Aspen					
Item	Symbol	Value	Unit	Item	Unit
<b>Heat Output</b>				<b>Type of heat input, for electric storage local space heaters only (select one)</b>	
Nominal heat output	$P_{nom}$	2.0	kW	manual heat charge control, with integrated thermostat	[yes/no]
Minimum heat output (indicative)	$P_{min}$	1.0	kW	manual heat charge control with room and/or outdoor temperature feedback	[yes/no]
Maximum continuous heat output	$P_{max, c}$	2.0	kW	electronic heat charge control with room and/or outdoor temperature feedback	[yes/no]
<b>Auxiliary electricity consumption</b>				fan assisted heat output	[yes/no]
At nominal heat output	$el_{max}$	0.0125	kW	<b>Type of heat output/room temperature control (select one)</b>	
At minimum heat output	$el_{min}$	0.012	kW	Single stage heat output and no room temperature control	[yes/no]
In standby mode	$el_{SB}$	0.0003	kW	Two or more manual stages, no room temperature control	[yes/no]
				with mechanic thermostat room temperature control	[yes/no]
				with electronic room temperature control electronic room temperature control plus day timer	[yes/no]
				electronic room temperature control plus week timer	[yes/no]
<b>Other control options (multiple selections possible)</b>					
				room temperature control, with presence detection	[yes/no]
				room temperature control, with open window detection	[yes/no]
				with distance control option	[yes/no]
				with adaptive start control	[yes/no]
				with working time limitation	[yes/no]
				with black bulb sensor	[yes/no]
Contact details	Name and address of the manufacturer or its authorised representative. Be Modern Ltd, 19-34 Bedesway, Bede Industrial Estate, Jarrow, NE34 3BE				